

Overview of Chapter 8 of the UDC

Tree Preservation, Landscaping, and Fencing

June 5, 2018

History

- There was a tree ordinance in first version of the UDC that was adopted in 2003.
- Heritage tree ordinance was adopted in February 13, 2007. Minor changes to protected diameter tree verbiage passed at this time.
- Protected tree section, heritage tree section, landscape and fencing standards were all rolled into one new chapter on June 1, 2011.

What is NOT a protected or a
Heritage Tree species;

Hackberry
Chinaberry
Ashe Juniper (Cedar)
Chinese Tallow
Mesquite

What is a
Heritage Tree Species;

Live Oak
Post Oak
Shumard Oak
Bur Oak
Chinquapin Oak
Monterey Oak
Bald Cypress
American Elm
Cedar Elm
Pecan
Walnut
Texas Ash
Southern Magnolia

Applies to all applications submitted for

Preliminary and final plat

Site plan

Constructions plans

Stormwater permits

Difference between inches and Diameter Breast Inch (DBH)



Divide inches by 3.14 to get DBH
Diameter tape is made to measure circumference

Example = 12 inches is 3.8" DBH

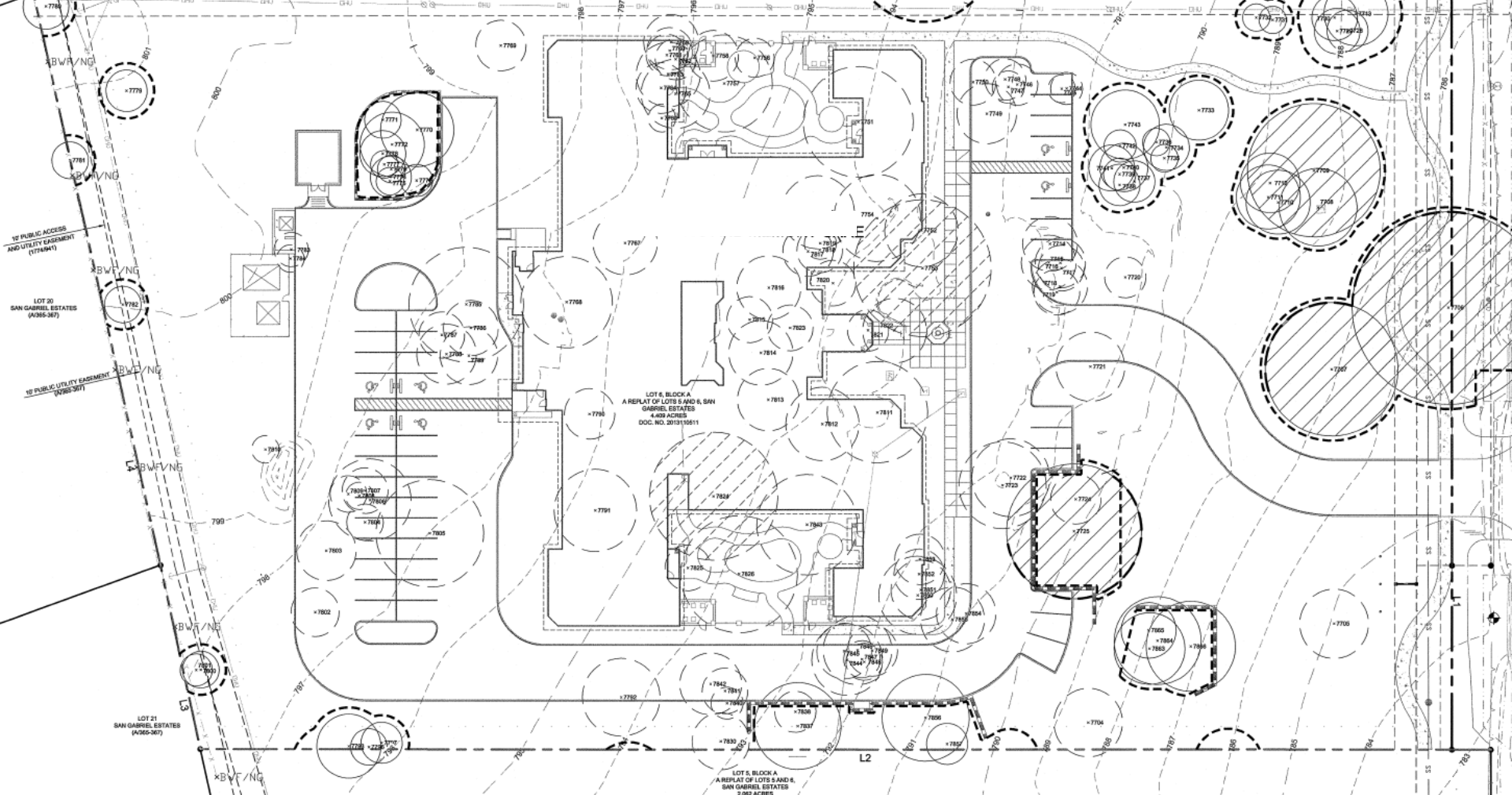
Protected Trees

- Protected tree = 12” DBH and greater (includes multi trunk)
- Applies to commercial development only, not single family residential
- Must preserve 20% or 30% of existing protected trees on site.
This calculation is based on existing protected tree density on development
- Mitigate for 40% of removed inches

12 " DBH tree



SAN GABRIEL ESTATES (4056-367)



10' PUBLIC ACCESS AND UTILITY EASEMENT (174841)

LOT 20 SAN GABRIEL ESTATES (4056-367)

10' PUBLIC UTILITY EASEMENT (174831)

LOT 6, BLOCK A
A REPLAT OF LOTS 5 AND 6, SAN GABRIEL ESTATES
4.682 ACRES
DOC. NO. 201315811

LOT 21 SAN GABRIEL ESTATES (4056-367)

LOT 5, BLOCK A
A REPLAT OF LOTS 5 AND 6, SAN GABRIEL ESTATES
2.282 ACRES

L5

L6

L2

KEY	TREE #	SIZE, IN	SPECIES
R-NP	421	6	LIVE OAK
R-NP	422	8, 6	LIVE OAK
C-NP	423	9	LIVE OAK
R-NP	424	8	LIVE OAK
R-NP	425	10	LIVE OAK
R-NP	426	8	LIVE OAK
R-NP	427	10	LIVE OAK
R-NP	428	8	LIVE OAK
R-NP	429	7	LIVE OAK
R-NP	430	7	LIVE OAK
R-P	431	20	LIVE OAK
C-NP	493	8	LIVE OAK
C-NP	494	9	LIVE OAK
C-NP	496	9	LIVE OAK
C-NP	3203	8	LIVE OAK
P	3204	18	LIVE OAK
P	3205	20	LIVE OAK
C-NP	3206	9	LIVE OAK
P	3207	14, 9	LIVE OAK
C-NP	3208	9	LIVE OAK
HT	3209	18, 17, 13	LIVE OAK
P	3210	9, 8, 7	LIVE OAK
C-NP	3211	9	LIVE OAK
C-NP	3212	8	LIVE OAK
P	3216	20	LIVE OAK
P	3217	20	LIVE OAK
C-NP	3218	9	LIVE OAK
P	3219	18	LIVE OAK
P	3220	16	LIVE OAK
HT	3221	35	LIVE OAK
R-NP	3222	9	LIVE OAK

TREE MITIGATION SUMMARY

REQUIRED PROTECTED TREE PRESERVATION PERCENTAGE (UDC SEC. 8.02.030.E)

PERCENTAGE OF PROTECTED TREES THAT MUST BE RETAINED ON SITE (NOT APPLICABLE TO RESIDENTIAL SUBDIVISIONS OR HERITAGE TREES)

PROJECT ACREAGE: 5.009

TOTAL NUMBER OF PROTECTED TREES EXISTING ON-SITE: 59

AVERAGE NUMBER OF PROTECTED TREES PER ACRE: 11.8

APPLICABLE REQUIRED PROTECTED TREE PRESERVATION PERCENTAGE: 20%

NUMBER OF EXISTING PROTECTED TREES TO REMAIN ON-SITE: 46

OWED MITIGATION FOR PROTECTED REMOVALS

OVERALL PROTECTED TREE MITIGATION INCHES OWED: 171**40% = 68 MITIGATION INCHES (23-3" TREES)

CREDIT TREES - ON-SITE PLANTED TREES

INCHES OF SHADE TREES PLANTED ON-SITE: 6 (17" OR 6 3" TREES)

CREDIT TREES - ON-SITE EXISTING TREES (6"-11" TREES ONLY)

MAY COUNT FOR UP TO 75% OF OVERALL REQUIRED PROTECTED TREE MITIGATION (DOES NOT COUNT TOWARDS HERITAGE TREE MITIGATION)

NOTE: CREDIT TREES COUNT TREE PER TREE REPLACEMENTS NOT IN INCHES

MAXIMUM AVAILABLE ON SITE CREDIT TREE DISCOUNT: 68**75% = 51" (17- 3" TREES)

NUMBER OF ON-SITE CREDIT TREES AVAILABLE FOR MAXIMUM DISCOUNT: 70 (6"-11" TREES)

SOIL AERATION & SUPPLEMENTAL NUTRIENTS CREDIT - UP TO 30%

MUST PROVIDE FISCAL SURETY BEFORE CERTIFICATE OF OCCUPANCY MAY BE ISSUED

MAXIMUM INCHES THAT CAN COUNT TOWARDS SOIL AERATION & SUPPLEMENTAL NUTRIENT CREDIT: 0

MAXIMUM SOIL AERATION OR SUPPLEMENTAL NUTRIENT PAYMENT: 0

TOTAL INCHES USED FOR SOIL AERATION OR SUPPLEMENTAL NUTRIENT: 0

OWED MITIGATION FOR HERITAGE TREE REMOVALS

OVERALL HERITAGE TREE MITIGATION INCHES OWED: 0

NUMBER OF THREE-INCH TREES OWED: 0

CASH PAYOUT

GOES INTO THE TREE FUND FOR BOTH PROTECTED AND HERITAGE TREES

AMOUNT OWED BY FEE-IN-LIEU: \$0.00

PROTECTED TREE FEE-IN-LIEU PAYMENT: \$0.00

HERITAGE TREE FEE-IN-LIEU PAYMENT: \$0.00

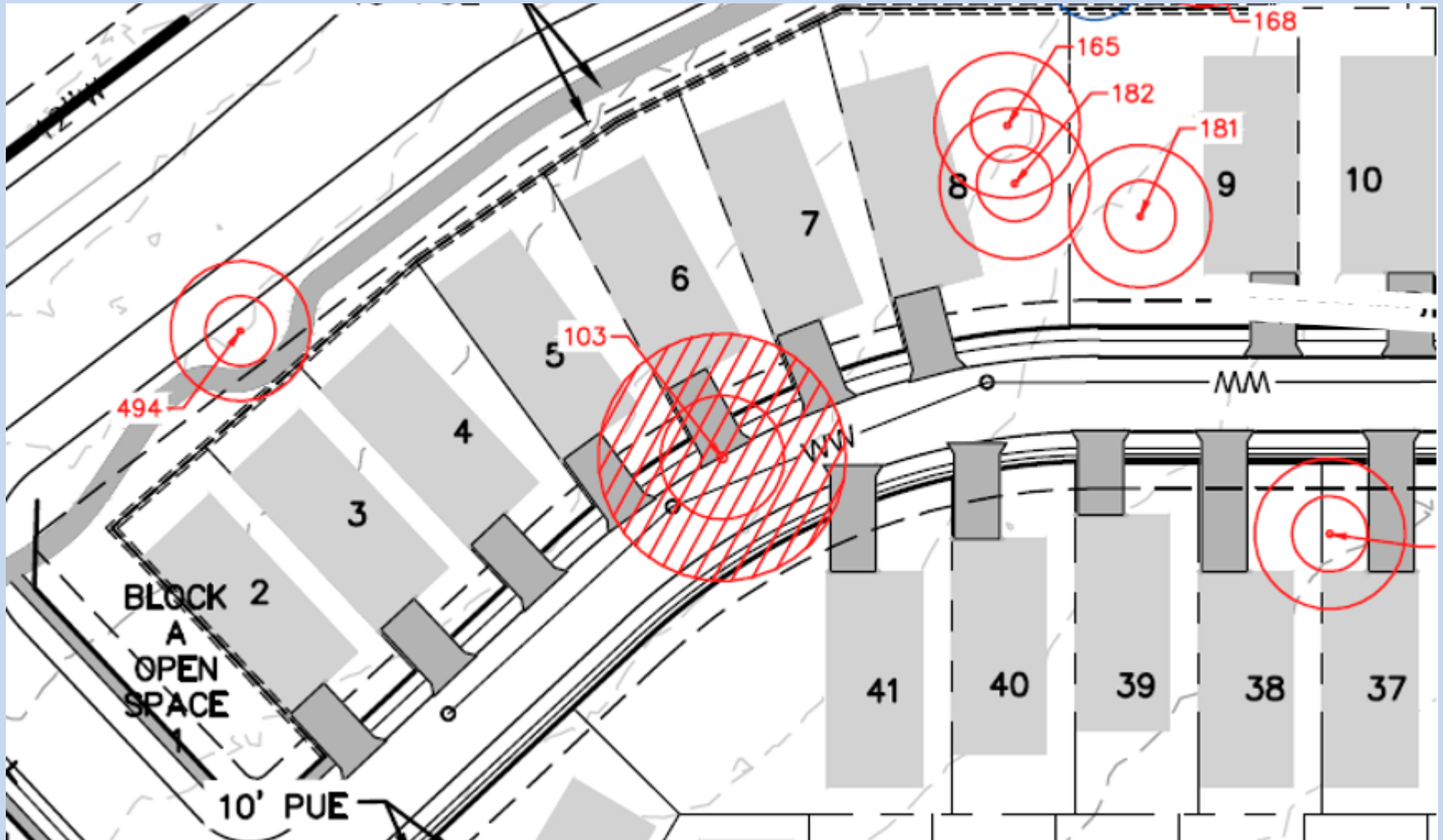
Heritage Tree

- Heritage tree = 26" DBH or greater (includes multi trunk)
- Applies to commercial & residential development
- Can not be removed without prior approval from City, but can be removed
- Must mitigate for 100% of removed inches
- Mitigation is at 3:1 when planting
- Trees 26" but not a heritage tree species are slightly elevated over protected trees



26" live oak

Buildable area exhibit



Vested

Development Agreements

PUDS

MUDS

PIDS

Mitigation Options

- On-Site credit trees = 6-11" trees (max 75%)
- Planting 3" trees on site
- Planting 3" trees off site on City property
- Soil aeration and supplemental nutrients on site
 - Up to 30% of total dollar figure owed
- Payment into tree mitigation fund =
 - \$150 per protected DBH (at 40%)
 - \$200 per heritage DBH (at 100%)

Tree Preservation Incentives

- Impervious cover increase – up to 5% increase
- Parkland dedication credit -HT in park = unit reduction in owed parkland
- Parking space reduction – 10% reduction in parking requirement for tree with 20” or greater, with 30% maximum
- Existing trees can be credited towards owed landscape depending on locations

Tree Preservation Priorities

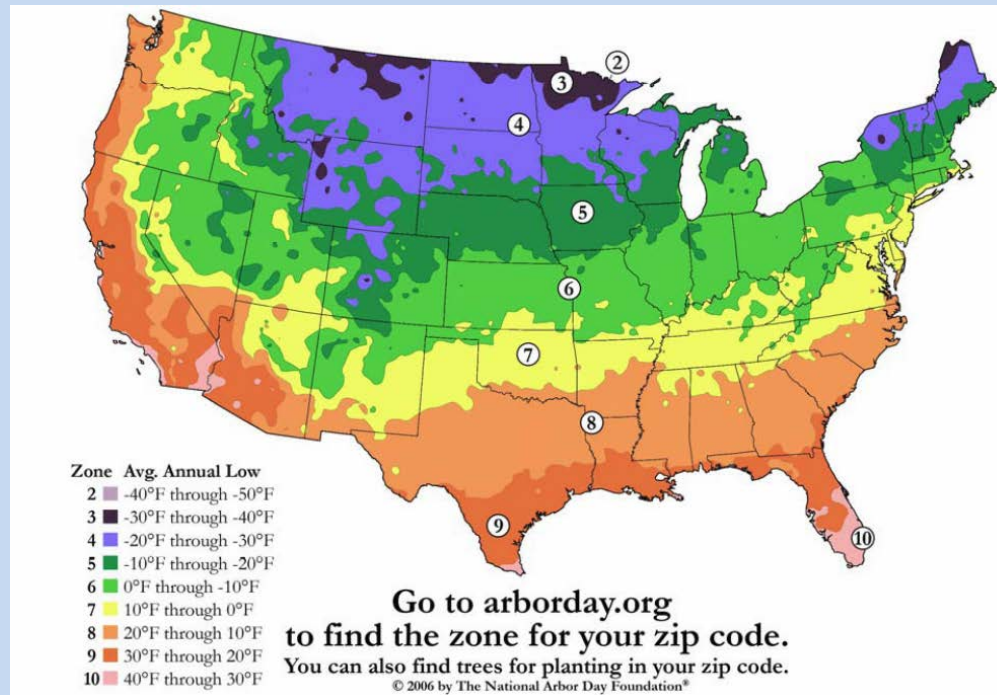
- Setbacks
- Lot design standards
- Building heights
- Sidewalks
- Lighting
- Signage
- Parking design standards & numbers
- Connectivity
- Driveway separation

Questions?



BREAK

Back home in New Hampshire,
Oregon, Washington State, Maine,
Northern California we could
grow.....



Texas AgriLife Extension ★ City of Austin

Native and Adapted Landscape Plants



an earthwise guide for Central Texas

Trees add 10-15% to the value of your house



Fabulous Trees for Texas

Shade Trees

Cedar Elm

Bur Oak

Monterey Oak

Chinquapin Oak

Shumard Oak

Live Oak

Ornamental Trees

Arizona Cypress

Possumhaw Holly

Yaupon Holly

Mexican Buckeye

Anacacho Orchid

Desert Willow

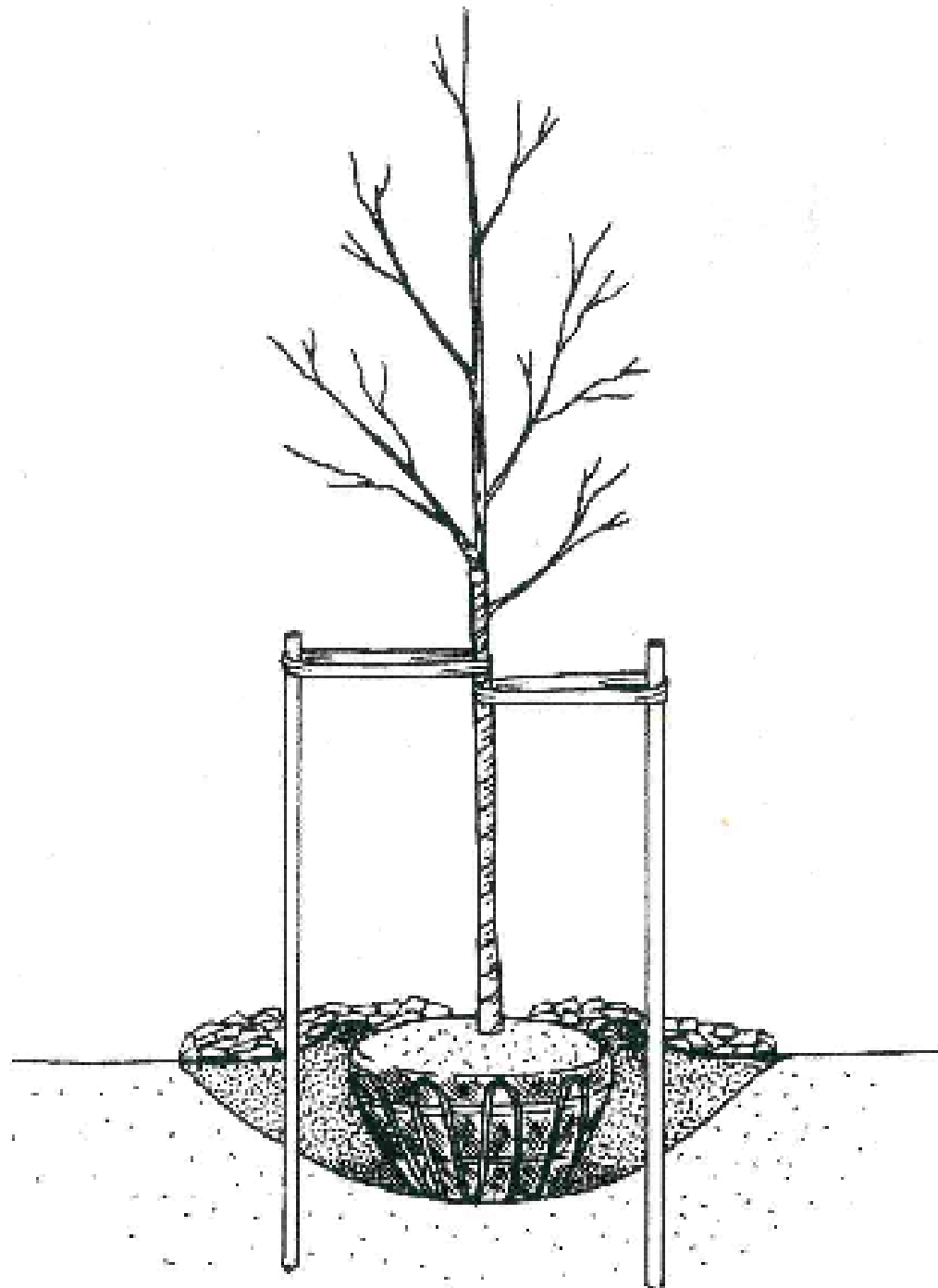
Mexican Plum

Planting New Trees

- Right tree in the right place
- Call 1-800- dig tess
- Dig hole twice as wide as root ball but not deeper
- With sharp hand clippers, cut 2-3 sides of root ball
- Backfill half way then lightly tamp down soil or water thoroughly, repeat after finish filling planting hole
- Plant tree about 2 inches above grade
- Come back later and expose root flair
- Properly mulch

Compost Magic





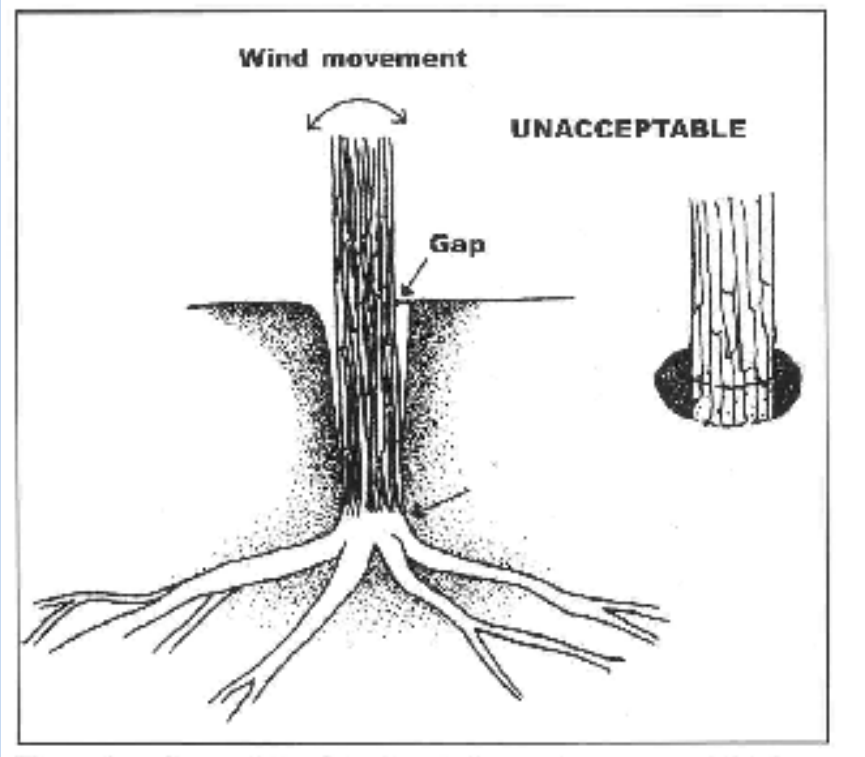
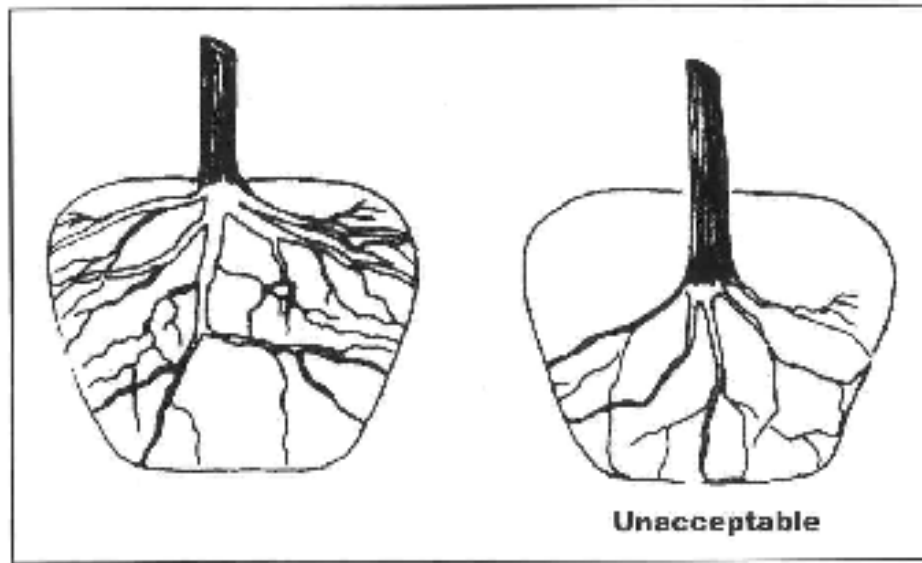


Encircling roots -->

© Great Stems

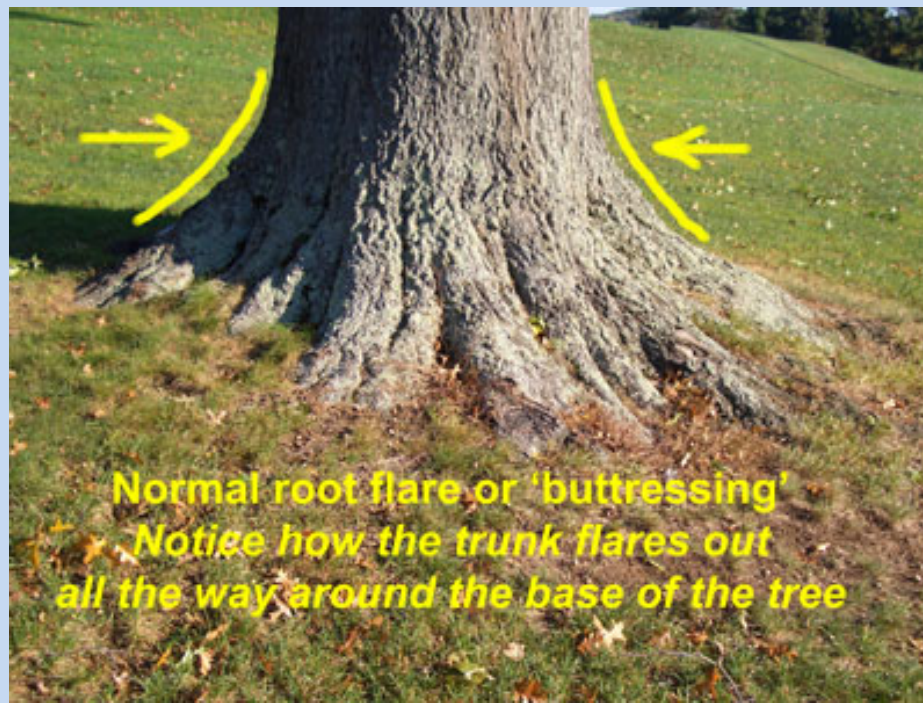


Bucket Planting Depth









Normal root flare or 'buttressing'
*Notice how the trunk flares out
all the way around the base of the tree*

Volcano Mulching







Questions?

